



## Ightham Primary School Newsletter

6th March 2026

### This Week

What a wonderful way to end the week with our celebration of World Book Day! The children looked fantastic in their creative outfits and thoroughly enjoyed the range of activities and book discussions. We are delighted to announce the launch of our Book Swap Shed, now filled with a wonderful selection of books thanks to your generous donations. The shed will be open every Tuesday after school, allowing children to swap a book they have read for a new one. We warmly welcome any further donations to keep the shed stocked with exciting reads.

Over the past two Fridays, our Eco Council and School Council have been collaborating with the local church on a tree-planting project. Last week, they were fortunate to participate in a workshop led by Naomi Webster, focusing on soil types and sustainability. This week, they have been busy planting the trees. If you visit the church, please take a moment to admire their hard work and contribution to our community.



We are also thrilled to celebrate a fantastic sporting achievement! Four of our pupils are members of the Borough Green Under 9s football team, and after competing against 62 teams, they have emerged as league champions. We are incredibly proud of their dedication and success.

We love hearing about what our children are achieving outside of school. To help us celebrate these accomplishments, please remember to complete the attached form with details of your child's activities and achievements outside school:

[Activities Outside of School – Fill in form](#)

Finally, I must address a serious concern. We have received several complaints from neighbours regarding parking at the start and end of the school day, as well as concerns about speeding cars. The safety of our children and community is paramount. Please ensure you park considerately, respecting local residents and keeping access clear for emergency vehicles. Remember, a 20 mph speed limit is now in place for everyone's safety, along with an informal one-way system designed to improve traffic flow and protect our community. Your cooperation in adhering to these measures is greatly appreciated.

Thank you for your continued support. Best wishes, Ms Earl



## World Book Day



## Acorn Class

This week we went on our trip to Pizza Express! The children really enjoyed learning about the ingredients used to make pizza, where pizza originates from and how to make their own! This then supported our learning as the children told their own stories about a runaway pizza, based on the story of The Gingerbread Man. We have learnt to represent and recall the bonds of numbers up to 10 this week, the children are becoming very good at subitising!



6th March 2026

## Pine Class

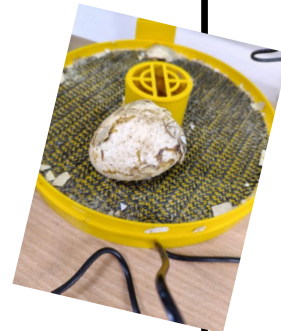
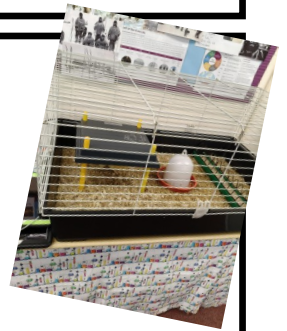
This week we have started to plan our stories with familiar settings. We have been creating exciting stories that take place on a farm, in a school playground, at a swimming pool and on a race track. The children are putting in lots of effort to write descriptive sentences using adjectives. In Maths, we have finished our unit on addition and subtraction and are looking forward to revisiting place value next week with numbers up to 50. Pine class were eager to start our History topic on Florence Nightingale. We began by sharing our stories about hospitals today followed by looking at the early life of Florence Nightingale.

## Chestnut Class

We have all become parents this week to our 5 ducklings Pepsi, Darcey, Izzy, Duck Vader and Fluff Ball (the children voted on the names)! We have been particularly proud of how sensitive the children have been to our ducklings, showing their kind nature. It has been amusing to watch the weighing of the ducklings and we even recorded some information about them in a spreadsheet! This week we have been learning about the differences between the North and South Pole and beginning our new topic on height and weight. The children have really enjoyed using rulers to measure. Our recounts have been completed and it has been interesting to read about all the different experiences the children have at home. Another enjoyable aspect of the week has been transferring our 2-d map sketches into 3-d models – such fun!

## Willow Class

In year 3 English this week we are getting ready to write personal description of a place we know, whilst in Reading we have finished our work on Sam Wu is not afraid of the Dark, finally reading the much anticipated ending of the story! In maths we have continued to look at fractions – comparing, contrasting and find equivalent fractions. In Geography we looked at different mountain features and discussed how animals – including us – adapt to the conditions found on mountain enabling us to use them for a variety of different activities. Whilst learning about Rosh Hashana in RE the class were treated to a bit of apple with honey. Our DT lesson this week was well timed for Book Day as we started practising the skills we will need to make our bookmarks, and also for Book Day we did a book scavenger hunt in the library.



### Elm Class

In Elm Class, we have been working hard to create an explanatory text about the Water Cycle. It has been lovely to see how much the children can remember about the Science we did last term. In Maths, we have started our new unit on fractions and have been learning all about mixed fractions and how to position them on a number line. We had great excitement in class on Wednesday, as we made simple circuits and lit up a bulb. In Geography, we have started our new unit on 'Europe'. An email will be coming home shortly to all parents in Elm Class, to invite you into class to tell us about your experiences of living in another European country... we'd love you to come.



### Beech Class

The highlight for Beech class this week had to be our Viking Day on Tuesday! The children arrived, full of enthusiasm, dressed as Vikings, ready for the day ahead. The morning was spent learning the trades and skills that Vikings would have needed to use, whilst re-enacting parts of the history of the Vikings that we have been learning about in class.

The morning ended with the children learning how to create a shield wall in battle and using archers for their attack. During the afternoon, the children discovered artefacts from the different stalls they had been working at in the 'Great Hall'. The day culminated with one of the children's clay pots being used as a mould for liquid pewter to be poured into, making a piece of jewellery. A wonderful day was had by all – a big thank you to the PSA, who so kindly funded this day for us.



### Oak Class

Year 6 have had a great week of learning. In RE, the class explored why Easter is important for Christians. Tag rugby with Mrs Parkinson and a second cricket session with Mr Marshall added plenty of energy to the week. PSHE lessons focused on developing economic literacy, while maths introduced the concept of ratio. In English, pupils wrote the most exciting part of an adventure story featuring a dramatic natural disaster.



### Awards and Certificates

The Gold Cup was awarded to:

Harrison in Year 5

Head Teacher certificates were awarded to:

Acorn Class—Oscar and Grace

Pine Class—Jasper and Sonny

Chestnut Class—Sophia and Barney

Willow Class—Hannah and Joshua

Elm Class—Finley and Louie

Beech Class—Freddie and Oliver

Oak Class—Jeannie and Florence

Maple Ready Award was presented to Elm Class .

Congratulations to all!

### Free School Meals

Looking ahead to September, please note there will be changes to Free School Meals (FSM) eligibility. If you are on Universal Credit, you can apply for FSM through Kent County Council (KCC) using this link: [KCC Free School Meals](#). Alternatively, you can contact the school office, and we will be happy to assist with the application process.

### PSA

You will find a sponsorship form in book bags this week. This is for our sponsored read over the Easter holidays. But if the idea of a sponsored read isn't your children's thing then why not use it to encourage them to do something else? A sponsored bike ride or dog walk? Something to do with arts and crafts - it is totally up to you. The class that raises the most money over Easter will win a prize!

Upcoming events

11th March - PSA Meeting (George & Dragon Ightham 7.30pm)

13th March - Mother's Day Plant sale

27th March - Film night

Easter holiday - Sponsored Read/Activity

3rd June - Bags2school

11th July - Ightham Summer Fair

Could you give up a couple of hours, once a month to come to PSA meetings? We meet roughly 8 times a year to discuss fundraising ideas and spending.

If you would like to come to a meeting and see if it floats your boat then please email [chair@ighthamrsa.com](mailto:chair@ighthamrsa.com) or just turn up!

Team PSA

### House Points

The House Points accumulated this term:

Mote	Chartwell	Knole	Oldbury
7	7	4	2

The winners this week were Mote

Well done!



# Ightham Primary School Newsletter

6th March 2026

## School Calendar

**Term 1:** 1st September – 17th October

**Term 2:** 27th October - 19th December

**Term 3:** 5th January – 13th February

**Term 4:** 23rd February – 2nd April

**Term 5:** 20th April – 22nd May

**Term 6:** 1st June – 21st July

### Inset Days:

1st September 2025

2nd September 2025

3rd November 2025

19th December 2025

1st June 2026

## Upcoming dates

**10th March** Community afternoon hosted by Year 1

**12th March** Year 6 Mayoral debate

**14th March** Football Tournament

**20th March** Year 1 class trip to the Florence Nightingale Museum

**23rd March** Parent Consultations, 3:40—6:30

**24th March** Parent Consultations, 3:40—6:30

**24th March** Year R Hearing and Vision screening

**25th March** Year 5 Ightham Mote Partnership gardening afternoon

**30th March** Choir Spring Concert

**2nd April** KS2 Easter Service, 9:15am

**2nd April** Last day of term

**20th April** Start of term

**23rd April** Year 6 swimming starts

**Attendance and Lateness** We are expecting attendance of 96% or above. The attendance for this week is:

Acorn	Pine	Chestnut	Willow	Elm	Beech	Oak	Whole School	National
95.69%	97.88%	98.13%	98.12%	97.83%	98.77%	97.5%	97.7%	95.3%

Number of lates	Acorn	Pine	Chestnut	Willow	Elm	Beech	Oak	Whole
	4	2	0	0	1	1	0	8

It is important that the children attend school every day. If you unsure if your child is well enough to attend school, please look at the NHS guidance. <https://www.nhs.uk/live-well/is-my-child-too-ill-for-school/>