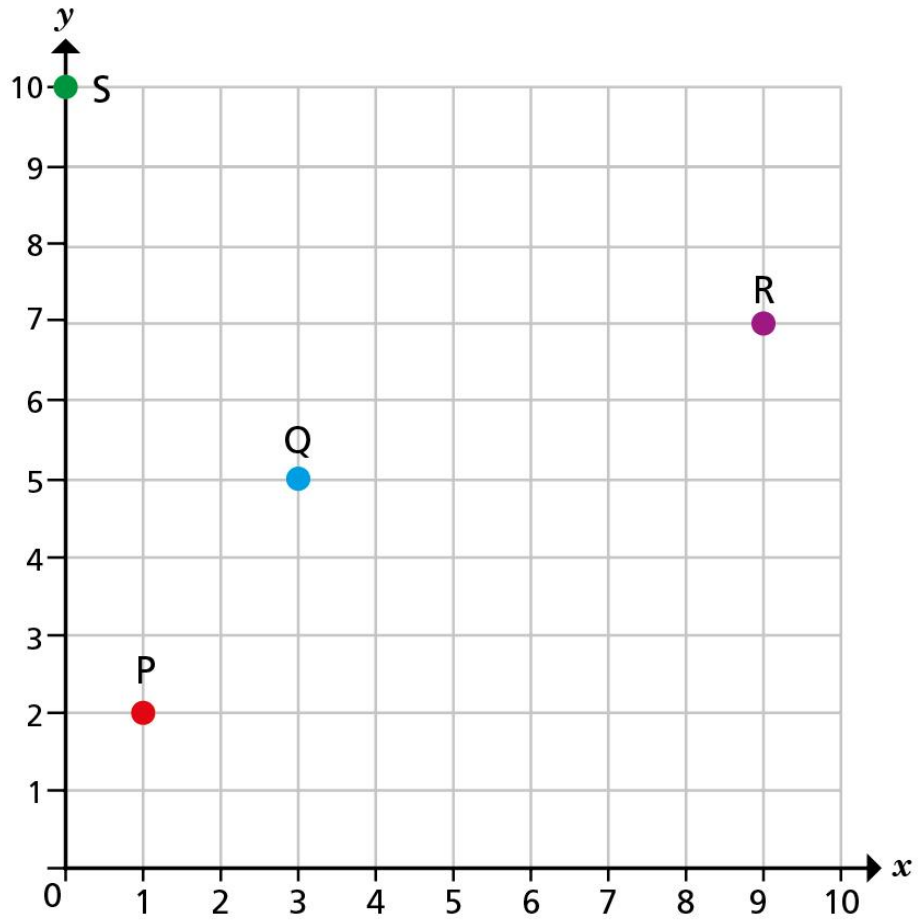


Translations

1



1 Describe the translations.

a) From P to Q is right and up

b) From Q to R is right and up

c) From R to S is left and up

d) From S to P is _____ and _____

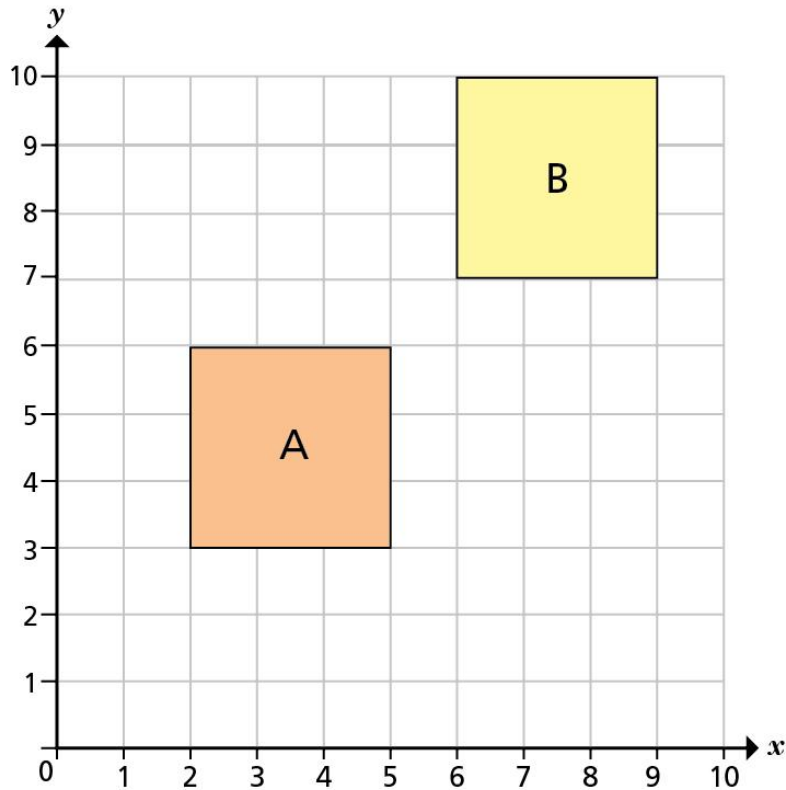
e) From Q to P is _____ and _____

f) From R to Q is _____ and _____

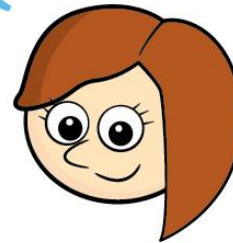
g) From S to R is _____ and _____

h) From P to S is _____ and _____

2



The translation
from A to B is
1 right and 1 up.

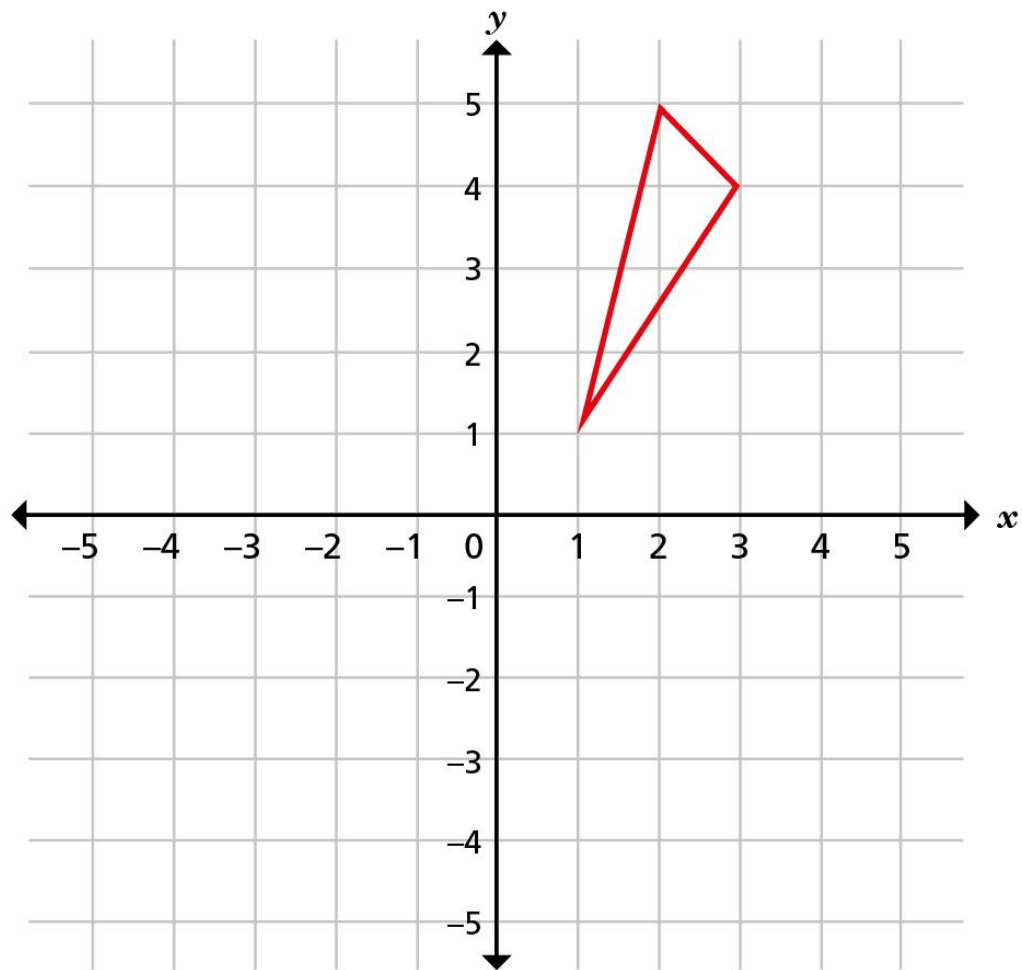


Do you agree with Rosie? _____

Explain your answer.



- 3 Translate the triangle 6 left.

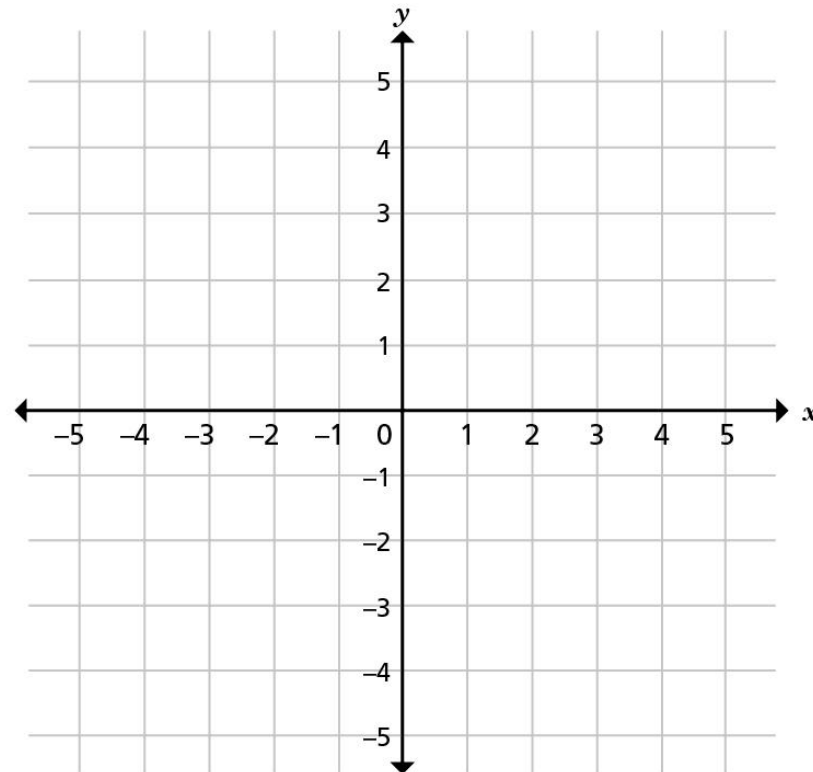


4

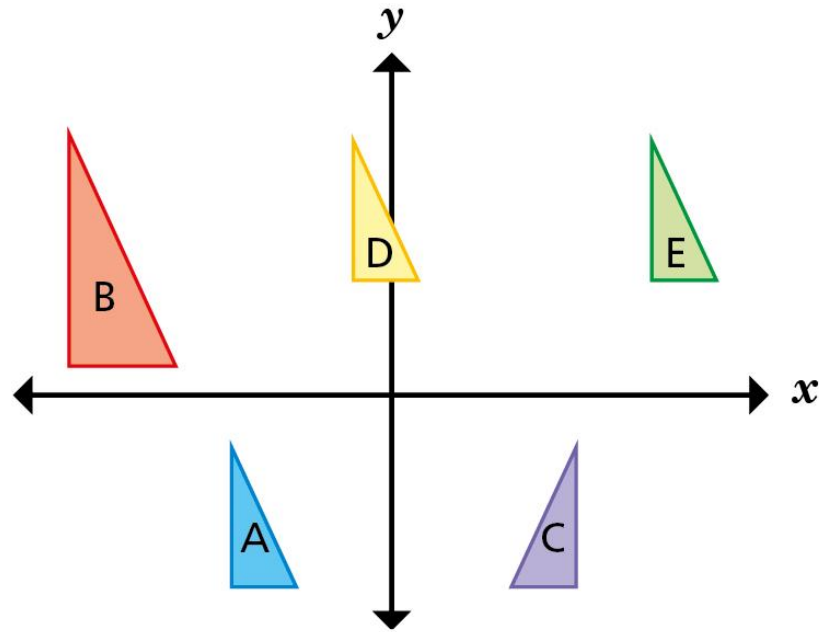
These coordinates form a quadrilateral: $(-5, 5)$, $(-5, 1)$, $(-1, 4)$, $(-1, 2)$

It is translated 3 right and 4 down.

Draw the quadrilateral on the grid in its **new** position.



5



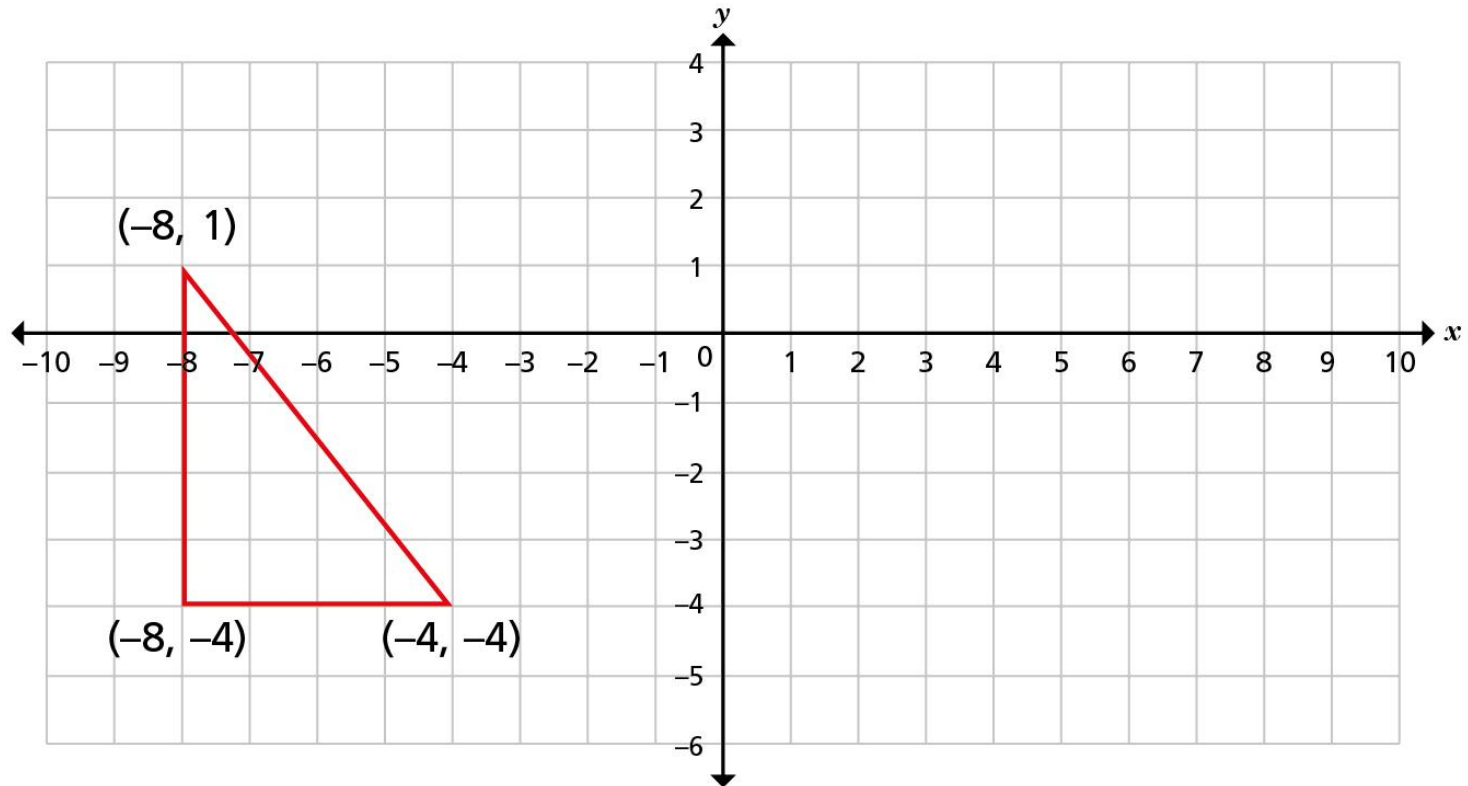
Which triangles are translations of each other?

Explain why the others are not translations.



6

A triangle is drawn on the coordinate grid.



a) Translate the triangle 9 right and 1 down.

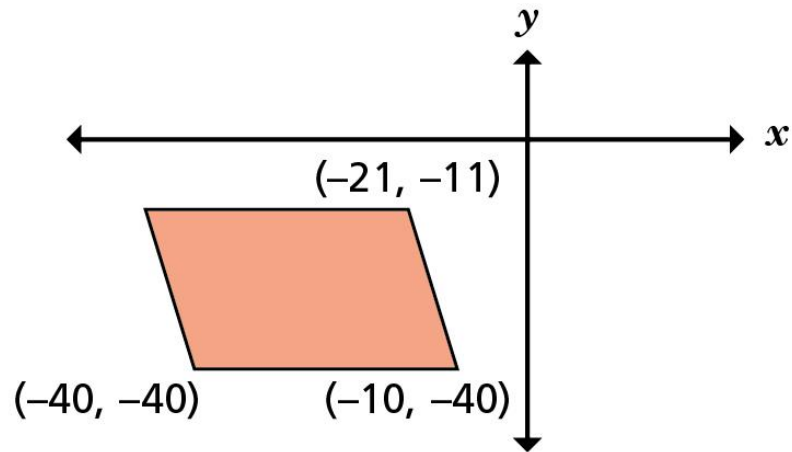


6

b) Tick the correct box for each coordinate.

Point	Inside the new triangle	Outside the new triangle	On the perimeter of the new triangle
$(0, 0)$			
$(4, -5)$			
$(2, -1)$			
$(-6, -3)$			
$(3, -4)$			

7



This parallelogram has been translated 50 left and 25 down.

What were the coordinates of **all four** vertices before it was translated?
